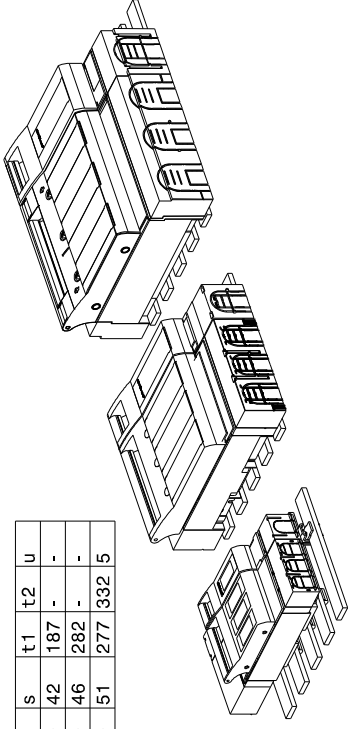
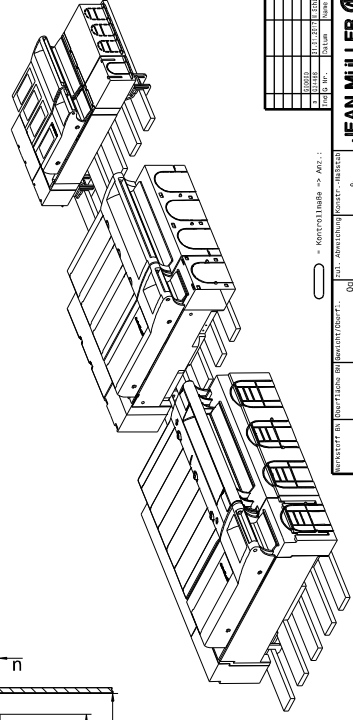
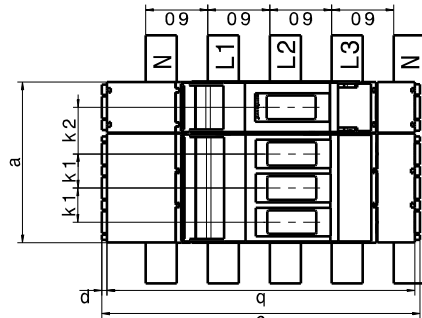
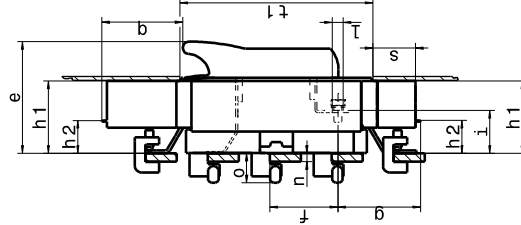
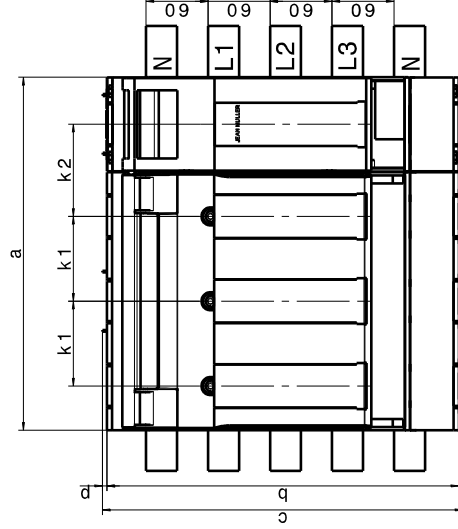
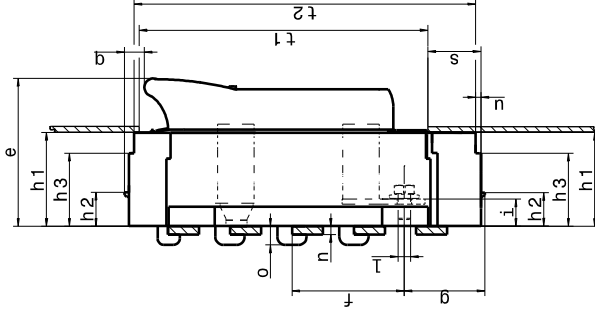


| Typ | a | b | c | e | f-Au | g-Au | h1 | h2 | h3 | i | k1 | k2 | l | n | o | p | q | s | t1 | t2 | u |
|-------------------|-----|-----|-----|-----|------|------|----|----|----|------|----|----|-------|-----------|----|-----|----|----|-----|-----|---|
| KETO-00-4/60/Au/F | 156 | 298 | 308 | 109 | 66 | 79 | 70 | 32 | - | 42 | 33 | 45 | 09 | 5 oder 10 | 28 | 4,5 | 79 | 42 | 187 | - | - |
| KETO-1-4/60/Au/F | 254 | 341 | 349 | 117 | 98 | 88 | 70 | 32 | - | 25,5 | 58 | 69 | 010,5 | 5-10 | 25 | 4 | 19 | 46 | 282 | - | - |
| KETO-3-4/60/Au/F | 342 | 341 | 349 | 143 | 109 | 78 | 90 | 32 | 70 | 26,5 | 82 | 89 | 014 | 5-10 | 25 | 4 | 19 | 51 | 277 | 332 | 5 |



KETO-1 bzw. 3-4-60/Au/F Abgang unten (Au)

KETO-00-4/60/Au/F Abgang unten (Au)



KONTAKT- & BERÜHRFLÄCHENGEWÄHRLEISTUNGSFÄHIGKEIT: Materialhandl. → Art.:

zuz. Anwendung: POSTER-VERSICHER

ARTIKEL-NR.: 00013

REISEZEIT: 773380

ÜBERNOMMEN: 000-001

DATEI-NR.: 000-001

PROJEKT-NR.: 000-001

PROJEKT-NR.: 000-001

PROJEKT-NR.: 000-001

JEAN MULLER

000-001

000-001

000-001

000-001

000-001

000-001

000-001

000-001

000-001

000-001

000-001

000-001

KETO-0013-4/60/Au/F

T0641

a

000-001

000-001

000-001