





Anschlußart	Typ	Anzugsdrehmoment	Klemmbereich Kabel	Schienen- bzw. Flachbandabmessungen
Terminal type	Type	Tightening torque	Clamping range	Size flat strip
 Flachanschluß M10	F-LTL2-M10	30 - 35 Nm	Kabelschuhe nach DIN 46234 u. 46235	30 x 10mm
Screw terminal M10	F-LTL2-M10	30 - 35 Nm	cable lugs acc. to DIN 46234 and 46235	30 x 10mm
 Schellenklemmenanschluß	S2	23 Nm	25 - 240 mm ² Cu	Stromschiene max. 19x10 Flex. Flachband max. 10x16x0,8
Clip terminal	S2	23 Nm	25 - 240 mm ² Cu	Busbars max. 19x10 flexible flat strip max. 10x16x0,8
 Prismenklemmenanschluß	P2	11 Nm	120 - 240 mm ² Al/Cu	-
Prism clamp	P2	11 Nm	120 - 240 mm ² Al/Cu	-
 Doppelprismenklemmenanschluß	P22	11 Nm	2x120-150 mm ² Al/Cu P22 in Kombination mit "K" nicht möglich	-
Double prism clamp	P22	11 Nm	2x120-150 mm ² Al/Cu P22 not possible in combination with "K"	-

Gebrauchsanleitung

Installation Instructions

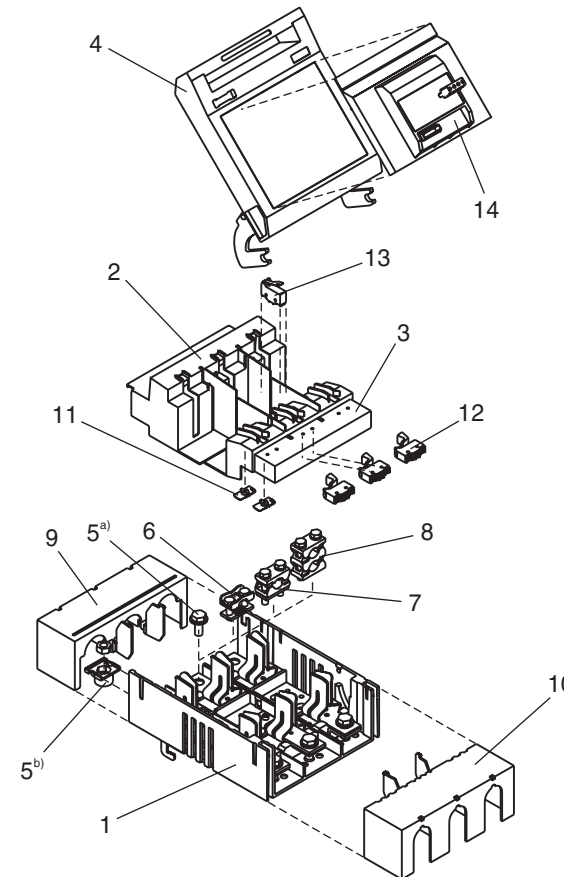
GA-T021

14569a

CE NH-Sicherungslasttrennschalter Gr. 2 - 3polig Sammelschienenmontage LV HRC fuse switch disconnecter Size 2 - 3-pole Busbar mounting

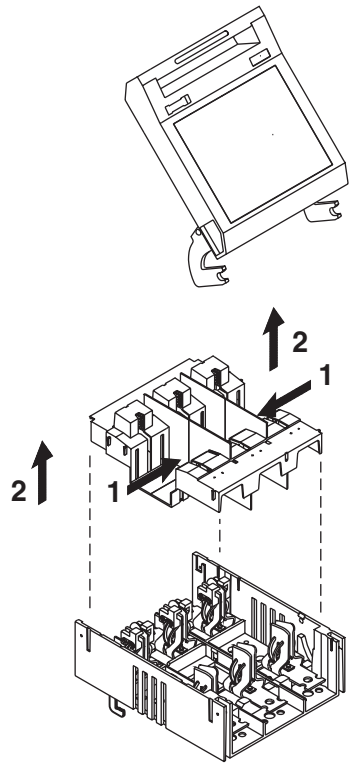


Vor Beginn der Arbeiten Gerät spannungsfrei schalten. Inbetriebsetzung und Wartung nur durch Fachpersonal. To prevent electrical shock disconnect from power source before installing or servicing. Work and maintenance by skilled staff only.

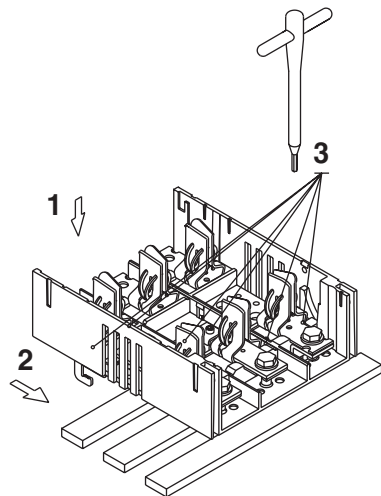


- 1 U-LTL2-3
- 2 BO-LTL2-3
- 3 BU-LTL2-3
- 4 D-LTL2-3/9
- 5 F-LTL2-M10 ^{a)b)}
- 6 S2
- 7 P2
- 8 P22
- 9 GO-LTL2-3
- 10 GU-LTL2-3
- 11 VHG-LTL00123-3
- 12 K-LTL2-3/H
- 13 eV-LTL123-3
- 14 D-LTL2-3/9/ES00

1



3



2

